

TOMPSETT ASPHALT

"Forget about the rest, get laid by the best"



TOMPSETT ASPHALT

ABOUT US

Established in 2019 in Melbourne, Tompsett Asphalt is a reputed name when it comes to civil construction industry. Our company offers pavement construction, rehabilitation, maintenance, concrete works, pipelaying, cross overs and traffic management. Our quality team and solutions are cost and time effective for all project needs.

Our Managing Director Matt Tompsett has delivered excellent quality solutions for its clients for over 20 years, in UK, Perth and Melbourne.

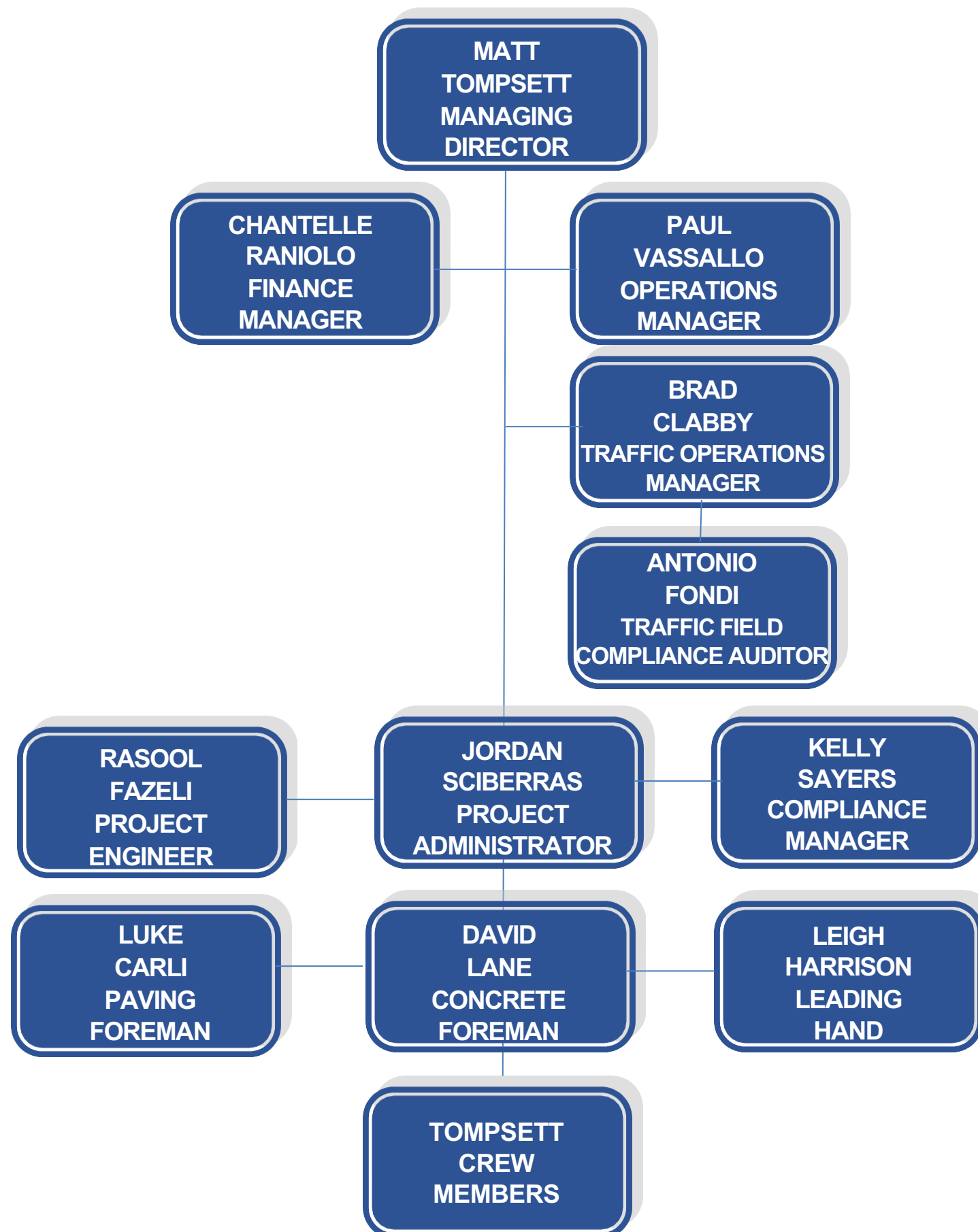
As we continue to invest in new plant and equipment ranging from excavators to asphalt pavers, trucks and heavy machinery our goal is to consistently improve productivity throughout our workmanship.

We also continue to support the development of our teams' training and development and highly upskill within the company to grow a highly productive team, as well as actively recruiting other skilled and experienced staff. An ambitious organisation employing over 60 staff members, we understand that company growth comes from hard work, investment in our people and exceptional service delivery.



TOMPSETT ASPHALT

OUR TEAM



TOMPSETT ASPHALT

OUR TEAM

Tompsett Asphalt has established a team of building professionals with a track record of delivering a diverse range of construction projects in the civil construction industry. Our team have unparalleled knowledge of the Melbourne metropolitan area through our experience in delivering various turnkey projects across the State.

With highly motivated and dedicated team we strive to achieve project excellence. We are committed in providing our clients with the best possible service throughout the project life cycle. The Tompsett Asphalt team consists of multi-skilled, driven individuals who offer a complete construction solution to your projects. We take pride in our ability to provide tailored construction services to our clients.

As a local Melbourne company, Tompsett Asphalt has the advantage of access to resources throughout the State and the ability to work with various local clients.

Matt Tompsett- Managing Director

As an elite business owner with over 20 years' experience within the civil construction industry, Matt has been the forefront of exceptional delivery of both small and large road transformation projects, providing professional state of the art civil works. Through Matt's extensive experience he has a strong ability to problem solve which is a great asset when coming across tedious tasks that require more planning and processes than the standard day to day tasks within the industry.

Paul Vassallo - Operations Manager

Paul plays a pivotal and essential role as our Operations Manager at Tompsett Asphalt, contributing significantly to the company's operational efficiency and successful project execution. With his keen organizational skills and strategic mindset, Paul is responsible for creating and managing comprehensive schedules that ensure seamless coordination of resources and timely completion of all asphalt projects.

Chantelle Raniolo - Finance Manager

With an extensive background in Finance Management and over 18 years' experience. Chantelle is a dynamic part of Tompsett Asphalt's team who ensures the financial management of the business and meets client's requirements daily. Chantelle ensures her team are trained and meet client needs and expectations daily with a vibrant and positive attitude.

Kelly Sayers- Compliance Manager

As our compliance manager, Kelly ensures that our company implements all the rules and regulations relevant to our industry. Kelly maintains our processes on a regular basis ensuring our staff are up to date with the changes in the industry. Her job is an integral part of our every day running to ensure we are fully compliant and up to date with all regulations within the industry.

Jordan Sciberras - Project Administrator

Jordan's plays a vital part at Tompsett Asphalt by providing comprehensive administrative support to the project management team. With a keen eye for accuracy, he ensures that all project documentation, including contracts, permits, and progress reports, are meticulously prepared and maintained as well as scheduling meetings, recording decisions, and breaking projects into manageable tasks. His proactive approach to organizing and cataloging project-related information fosters seamless communication and enhances efficiency within the project teams.

Brad Clabby – Traffic Operations Manager

Brad brings to the team an extensive background in the traffic management field with over 30 years' experience. He manages a team of over 30 traffic controllers in our traffic division in multiple locations each day, Brad's operational management ensures that each traffic team is coordinated effectively and efficiently to assist with the success and safety of numerous projects in the metropolitan area of Melbourne.



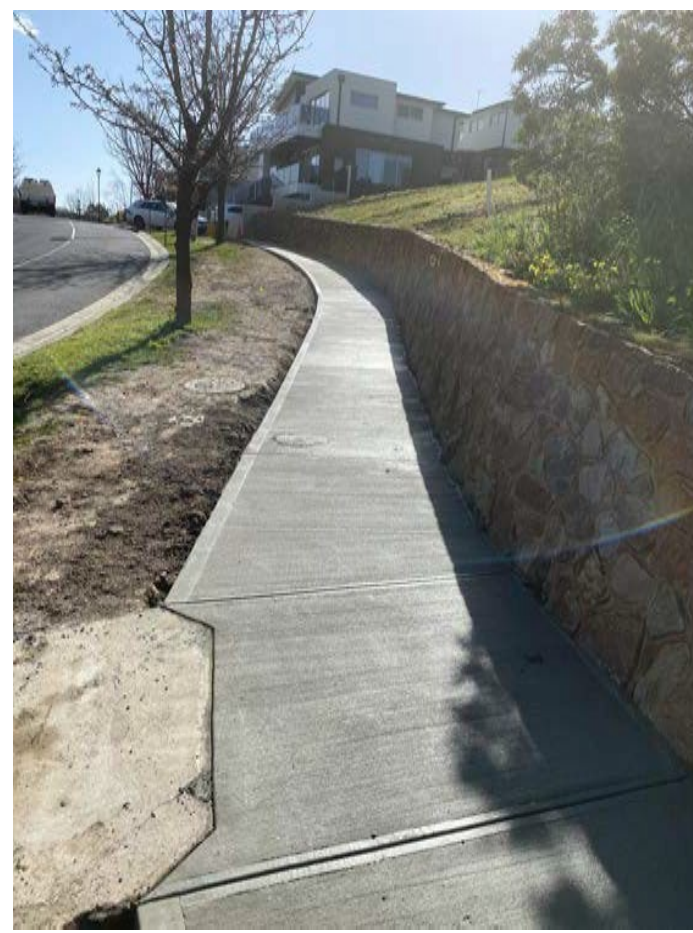
TOMPSETT ASPHALT

OUR SERVICES

Tompsett Asphalt embraces innovative thinking by making a difference for clients and its projects. Our aim is to always deliver on the clients needs for every project that we complete.

Tompsett Asphalt provide a range of services including, but not limited to;

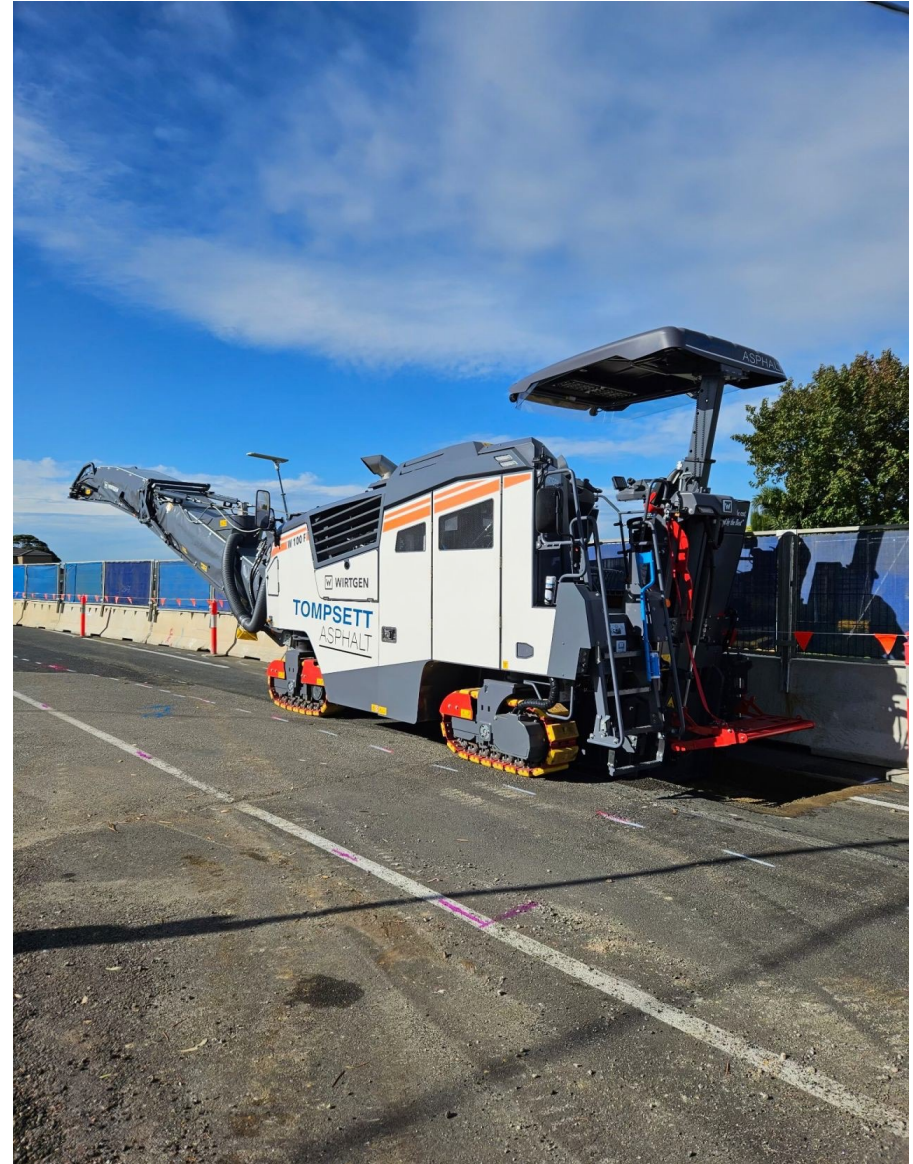
- **Road Reinstatements, all lengths and sizes**
- **Road Profiling**
- **Asphalt Carparks**
- **Asphalt Roadways**
- **Asphalt Repairs**
- **Asphalt Re-sheeting over Asphalt or Concrete**
- **Asphalt Speed Humps**
- **Concrete Reinstatements**
- **Crossovers**
- **Complete Traffic Management**



TOMPSETT ASPHALT

OUR FLEET AND MACHINERY

Tompsett Asphalt has a wide range of brand-new machinery to make sure our work is completed with high quality standards and efficiency.



TOMPSETT ASPHALT

OUR FLEET AND MACHINERY



TOMPSETT ASPHALT

MOONEE VALLEY CITY COUNCIL



Location	Moonee Valley Municipal Wide
Client	Moonee Valley City Council
Scope of works	Construction and reinstatements of asphalt and concrete footpaths, roads, kerb and channel and bluestones Road Resheeting and Profiling of larger sections of roads is a core part of this contract



TOMPSETT ASPHALT

PFM (MELBOURNE AIRPORT)



Location	Melbourne Wide
Client	PFM/Melbourne Airport
Scope of works	Construction and reinstatements of asphalt and concrete footpaths, roads, kerb and channel and bluestones
	Full Traffic Management Service provided



TOMPSETT ASPHALT

GREATER WESTERN WATER & PFM



Location	Melbourne Wide
Client	Greater Western Water/PFM
Scope of works	Construction and reinstatements of asphalt and concrete footpaths, roads, kerb and channel and bluestones Full Traffic Management Service provided



TOMPSETT ASPHALT

BUILDING TOGETHER – TIES TO THE LAND

Tompsett Asphalt proudly acknowledges and celebrates the heritage of Australia's first peoples, a legacy we deeply honor.

We actively foster career growth and economic participation for Aboriginal and Torres Strait Islander Australians.

Recognizing the land as belonging to Aboriginal and Torres Strait Islander peoples, we uphold its significance.

Embracing cultural diversity, we cultivate a more dynamic and innovative workforce.

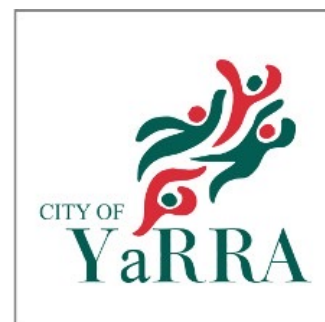
Our policies prioritize respect for diverse cultures, ensuring inclusivity across our company.

We continuously offer career opportunities to individuals of varied cultures, genders, ages, and religions.



TOMPSETT ASPHALT

OUR PROJECT PARTNERS



TOMPSETT ASPHALT

“Forget about the rest, get laid by the best”

175 Proximity Drive, Sunshine West 3020

paul@tompsettasphalt.com.au

tompsettasphalt.com.au

Contact us on 0460 351 130 to find out how your team can work together with Tompsett Asphalt for your next project.



Insurance Details:
Company and Public Liability Insurance Insurance Provider: GARD Insurance Pty Ltd Insurance Value 20m
Insurance Expiry: 03/2025

Company Professional Indemnity Insurance Insurance Provider: Berkley Insurance Australia Insurance Value: 10m
Insurance Expiry: 03/2025

Contractors Plant Insurance Insurance Provider: UAA Insurance Insurance Value: 20m
Insurance Expiry: 03/2025

